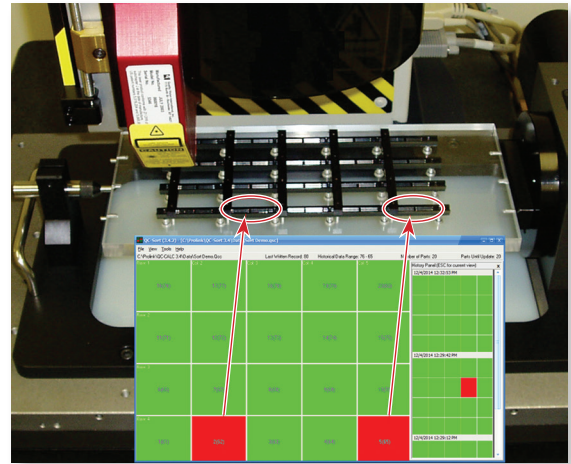


## Introduction

This non-statistical application is used in conjunction with QC-CALC Real-Time to quickly identify bad parts on a multiple part fixture. QC-Sort makes it easy for operators to remove problem parts from the fixture by using color coded squares matching the physical layout of your parts as they are fixtured.

## Key Benefits

- Out of Spec parts clearly displayed
- Past fixture results available
- Automatically printed fixture results
- Ability to view partial fixture results



## Sort Plans Keep you Organized

Simply point the Sort Plan to a QCC file, tell it how many records to look at, and specify the general layout of the fixture.

## Color Coding for Easy Identification

QC-Sort reads the data QC-CALC Real-Time collected and looks at it by the set number of records that were configured. The parts are then laid out to match your fixturing. If any characteristic on a part is out of specification, that part is considered a bad part and is displayed in red. All good parts are displayed in green.



## Partial Batch

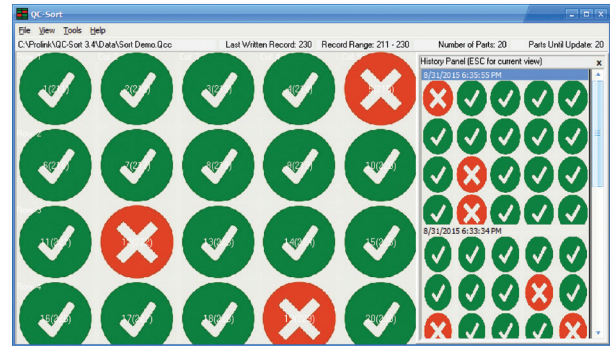
Partial batches can be handled with a quick adjustment. QC-Sort will automatically display the partial batch and return to normal for the next batch.

## History Panel

The History Panel displays up to 5 past batches on the right side of the screen. Click on the past batch of interest to see it as the main display.

## Pictures for Display

Pictures can be used in place of colored rectangles to help operators remove the correct parts from the fixture.



## Printed Results

The Auto Print option prints the screen for each batch so the results can stay with the physical fixture.

